



NFT Blizzard 2ax-90

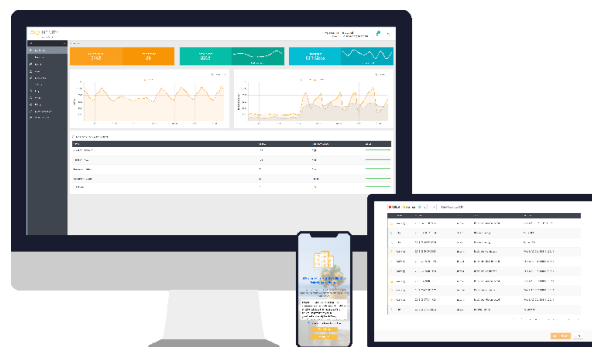
A 2.4/5GHz Dual-Radio 802.11ax Outdoor Sector Access Point



NFT Blizzard 2ax-90

The NFT Blizzard 2ax-90 is an outdoor Wi-Fi access point built on high-performance 802.11ax/.be Quad-core platform with dual integrated 2.4GHz and 5GHz 2x2 MIMO radios, boasting up to +25dBm of transmit power.

Single gigabit Ethernet port with 802.3at support allows users to power up the device using PoE switches. The NFT Blizzard 2ax-90 is specifically designed for cost-efficient, yet professional outdoor hotspot scenarios. With future-proof firmware upgrade path to 802.11be functionality, such as Multi-Link Operation, Preamble Puncturing, enhanced TWT, the IP66-rated hardware kit, integrated surge protection, zero-loss antenna design and easy-to-deploy mounting kit ensure an effective solution for a variety of outdoor connectivity applications, including public Internet access in transportation, education, hospitality, warehousing, retail, dining venues, and many more.



Infinity Controller

The Infinity Controller is an intuitive product and network management platform for your NFT devices. It allows easy, simple, and fast network installation, configuration, and control, all of which can be performed using a web browser.

The Controller also facilitates network maintenance and expansion by automating these processes. The management platform is Cloud-based, serving as an optimal solution for fast rollout and efficient management of indoor and outdoor wireless networks of any size, regardless of geographical locations.



Automated Device Onboarding

Automated device onboarding (ADO) is the process of automatically setting up Infinity access points to be added to the network. ADO eliminates the discrepancies caused by manual setup, and also simplifies the deployment process by reducing IT maintenance time.

Automated device onboarding requires one-time configuration of the Cloud AP, after which the settings are automatically applied to all Infinity access points that are newly-connected to the network using a physical connection.



Flexible Network Scaling

The Infinity Controller is designed with various types of networks in mind, whether they contain just a few access points or thousands of them.

Networks can be categorized into different logical groups (up to 4 layers) based on geographical location, service type, company branch, or other criteria. Each group can have different configurations assigned to them and access points can easily migrate between networks.

Furthermore, the External Infinity Controller (deployed on customer premises) supports multiple organizations simultaneously (many network owners)



Pay as You Grow

A cloud-based Infinity Controller account is free and supports a network of up to 10 Infinity wireless access points, but can be expanded as the business grows. Learn more about the paid version [here](#).



Predefined Scenarios for Your Applications

The Infinity Controller provides an array of features, collectively forming the optimal solution for multiple scenarios, e.g. a complete any-size office access point network, small café or shop hotspot, and an Easy Mesh application, which is popular among small hotels, schools, and hospitals.



IP Session Logging

Network Security in Hardware Infinity Controller and NFT access points allow network owner to track and log network performance and usage.

Hardware-accelerated data flow reporting and provisioning API* allows centralized security control and QoS policies enforcement across the network, with zero impact on access point performance.

Dedicated hardware IPSec/MACSec engine** supports AES-256-protected network connections not only over the air (WPA3), but end-to-end, across wired LAN or any type of public networks, eliminating the need in additional branch office VPN hardware, securely connecting geographically separated sites without impacting network performance, without additional administrative and financial overhead.



Easy Mesh*

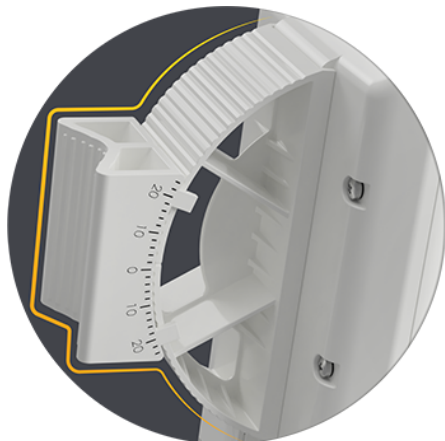
Easy Mesh is LigoWave's solution to wireless network coverage expansion and device configuration automation. This feature is designed for the NFT Series (as well as DLB devices utilizing NFT firmware) and is only available on the Infinity Cloud Controller.

The Infinity Cloud Controller allows users to set up an Easy Mesh network in a plain and simple way: just have at least one LAN-connected AP, create a new Easy Mesh network, assign devices to it, and you are good to go!



Small Form Factor

A small form factor means smaller packaging, which in turn reduces transportation costs and enables the devices to blend in better with the surroundings. Moreover, the NFT Blizzard 2ax-90 enclosure is non-metallic, IP66 weatherproof and UV-proof, making the device lighter and corrosion-resistant.



Innovative Pole Mounting

The NFT Blizzard 2ax-90 has an innovative adjustable mounting bracket, designed for assembly and installation on poles or walls.

It consists of two easy-to-connect parts that allow robust mounting and precision tilting. A metal strap is included to securely tighten the device.

The design includes additional reinforcements and strong materials to ensure resilience in extreme climate conditions.

Specifications

Wireless

WLAN Standard	IEEE 802.11a/b/g/n/ac/ax/be*
Radio Mode	Dual 2x2 MIMO, MU-MIMO, OFDMA
Radio Frequency Band	2.402–2.482GHz Worldwide**; FCC 2.402–2.472GHz (CH1–CH11) 5.150–5.895GHz Worldwide**; FCC UNII -1, -2, -3
Transmit Power	2.4GHz: Up to +20dBm @ MCS11; Up to +25dBm @ MCS0** 5GHz: Up to +18dBm @ MCS11; Up to +24dBm @ MCS0**
Channel Size	2.4GHz: 20, 40MHz 5GHz: 20, 40, 80, 160**MHz
Modulation Schemes	802.11ax: OFDMA/OFDM (1024-QAM to BPSK) 802.11ac: OFDM (256-QAM, 64-QAM, 16-QAM, QPSK, BPSK) 802.11a/g/n: OFDM (64-QAM, 16-QAM, QPSK, BPSK) 802.11b: DSS (CCK, DQPSK, DBPSK)
Data Rates	802.11ax @ 160MHz: 2868 to 172Mbps 802.11ac @ 80MHz: 866, 780, 650, 585, 520, 390, 260, 195, 130, 65Mbps 802.11n @ 40MHz: 150, 135, 120, 90, 60, 45, 30, 15Mbps 802.11a/g @ 20MHz: 54, 48, 36, 24, 18, 12, 9, 6Mbps 802.11b @ 20MHz: (11, 5.5, 2, 1Mbps)
Duplexing Scheme	Time division duplex/OFDMA
Wireless Security	WPA/WPA2/WPA3 (AES) Personal, WPA2/WPA3 (AES) Enterprise, SAE, Hotspot(UAM)*
Roaming	Yes (802.11r Fast Transition)

Antenna

Type	Integrated Dual-Polarized 2.4/5GHz 90° Sector Antenna
Gain	11dBi (5GHz) / 9dBi (2.4GHz)

Wired

Interface	10/100/1000 Base-T, RJ-45
Receiver Sensitivity	2.4GHz: From -95dBm (HE20, MCS0) to -65dBm (HE40, MCS11) 5GHz: From -96dBm (HE20, MCS0) to -55dBm (HE160, MCS11)

Networking

Operating Mode	Bridge, Router
Management IPv4	Static, Dynamic
Management IPv6	Dynamic Stateless, Dynamic Stateful*, Static*
Secondary IPv4	Supported, Fallback/Static
VLAN	802.1Q for Management and SSID-to-VLAN, Private WLAN*
Virtual SSID	32 (16 per radio)
Band Steering	Supported (Auto or User-configurable)
Tunnels	GRE/L2TP with IPSec

* To be available in future firmware upgrades

** Country-dependent

Traffic Management

Client Isolation	Supported, Intra-VAP and Inter-VAP
Airtime Fairness	Configurable policy and weights*
Wi-Fi Multimedia (WMM)	Supported
Multicast Enhancement	Supported
Concurrent Clients	Up to 500

Services

Monitoring	NTP client, SYSLOG, system alerts to Controller*
Configuration	HTTPS/HTTP, SSH
Discovery	CDP/LLDP
Authorization	802.1x/RADIUS, EAP-SIM/EAP-AKA, RADIUS DAS/CoA support

Power

Power Supply	802.3at active PoE in (55 VDC) or PASSIVE 55-57VDC 1Gbps
Power Source	~100-240 VAC (AC to 55 VDC PoE Adapter Included)
Power Consumption	Up to 15W max, under 13W typical

Physical Specifications

Dimensions	380mm, 100mm, 35mm
Weight	0.5kg
Mounting	Pole/Wall Mounting Bracket Included

Environmental Specifications

Operating Temperature	-40°C (-40°F) ~ +65°C (+149°F)
Humidity	0~90% (Non-Condensing)
Surge Protection	2/4kV (Class 4), Grounding mandatory

Management

Controller	System Monitoring via SNMP v1-v3, Monitoring and Management* via Infinity Cloud
------------	---

Regulatory

Certification	CE, EN 300 328, EN 301 893, EN 301 489-1/17, EN62368-1, FCC* Part 15
---------------	--

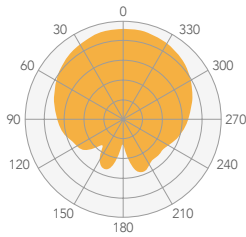
* To be available in future firmware upgrades

** Country-dependent

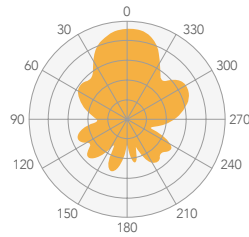
Antenna specifications

2.4GHz

V Pol

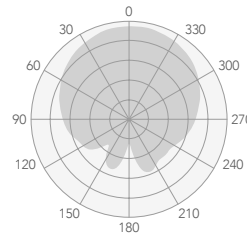


Azimuth

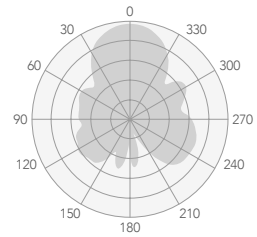


Elevation

H Pol



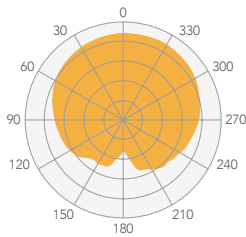
Azimuth



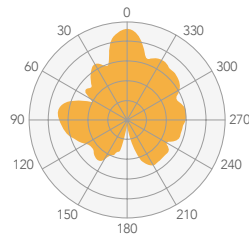
Elevation

5GHz

V Pol

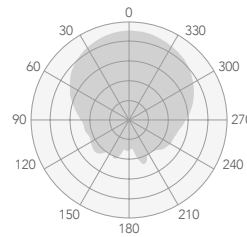


Azimuth

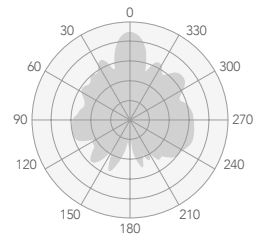


Elevation

H Pol



Azimuth



Elevation

5GHz Integrated Antenna

Frequency Range	5.150 – 5.850GHz
Gain	11dBi
Polarization	Dual Linear
Cross-Pol Isolation	23dB
VSWR	<1.7, typically 1.3
Azimuth Beamwidth (H-Pol)	90°
Azimuth Beamwidth (V-Pol)	90°
Elevation Beamwidth	16°

2.4GHz Integrated Antenna

Frequency Range	2.402–2.482GHz
Gain	9dBi
Polarization	Dual Linear
Cross-pol Isolation	18dB
VSWR	<1.7, typically 1.3
Azimuth Beamwidth (H-Pol)	90°
Azimuth Beamwidth (V-Pol)	90°
Elevation Beamwidth	35°



LigoWave

www.ligowave.com

NFT Blizzard 2ax-90

Copyright © 2025 LigoWave. All rights reserved. LigoWave and the LigoWave logo, are trademarks of LigoWave. All other company and product names may be trademarks of their respective companies. While every effort is made to ensure the information given is accurate, LigoWave does not accept liability for any errors or mistakes which may arise. Specifications and other information in this document may be subject to change without notice. To learn more about LigoWave products, visit www.ligowave.com.

Revision date: 2025/11/06