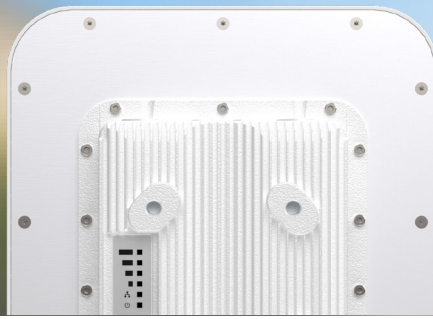




# LigoDLB 6-90ax

High-Performance 802.11ax 6GHz Wireless Device  
for Point-to-Multipoint Applications



## Next-Gen Wireless Performance for Demanding Networks

The LigoDLB ax Series delivers high-performance for Point-to-Multipoint wireless connectivity with 802.11ax technology, delivering up to 1.5 Gbps throughput, 1024-QAM modulation, and up to 24 dBm output power for fast, stable, long-range links. A dual-core CPU, 2.5 Gbps Ethernet port, and 160MHz-wide channel support ensure exceptional data processing and high PPS rates—ideal for real-time transmission. Enclosed in a rugged IP67-rated housing, it offers reliable, all-weather performance in even the harshest environments.

### Ultra High Performance Wireless Device

<1500Mbps

### Working Frequency

6-7GHz

### Distance Recommendations:

Maximum (6km/3.73mi)

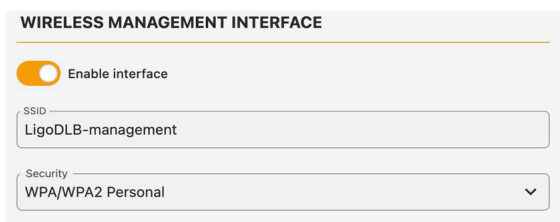


Optimal (2km/1.24mi)



### Second Ethernet Port

The Gigabit Ethernet port with software-enabled PoE powers external devices like 802.3af PoE CCTV cameras or other LigoWave gear, offering flexible integration. This eliminates the need for extra PoE switches, lowering deployment costs and simplifying installations.



### Improved Noise Immunity



The metal casing reduces interference and noise when multiple devices are mounted on the same pole. Its IP67-rated housing also acts as a heatsink, improving RF performance by dissipating heat.

### Surge Protection

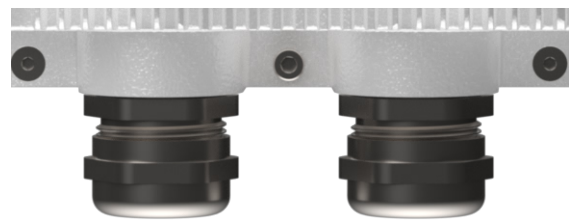


Complying with IEC 61000-4-5, it offers 6kV line-to-ground and 2kV line-to-line protection for reliable performance in harsh weather and unstable electrical conditions.

### Design Built to Last



Designed for tough weather, it features an IP67-rated anticorrosive metal casing for long-lasting durability, making it a reliable choice for projects requiring standardized IP-rated equipment.



### Remote Management Radio

Built-in 2.4 GHz management radio enables wireless configuration from up to 20 meters away. Ideal for installations in hard-to-reach areas, reducing maintenance costs and improving operational safety.

# Technical Specifications

## Distance

Maximum	6km (3.73mi)
Recommended	2km (1.24mi)

## Wireless

WLAN Standard	IEEE 802.11ax
Radio Mode	Dual 2x2 MIMO
Radio Frequency Band	6GHz models: 5.9-7.1GHz

Transmit Power	Up to +24dBm (Country Dependent)
Out-of band management	2.4 GHz access radio
Channel Size	20, 40, 80, 160MHz
Receiver Sensitivity	From -96dBm (HE20, MCS0) to -55dBm (HE160, MCS11)
Modulation Schemes	802.11ax: OFDMA/OFDM (1024 QAM, 256-QAM, 64-QAM, 16-QAM, QPSK, BPSK)
Data Rates	802.11ax @ 160MHz: 2402, 2161, 1921, 1729, 1441, 1297, 1152, 864, 576, 432, 288, 144Mbps 802.11ax @ 80MHz: 1201, 1080, 960, 864, 720, 648, 576, 432, 288, 216, 144, 72Mbps 802.11ax @ 40MHz: 573, 516, 458, 412, 344, 309, 275, 206, 137, 103, 68, 34Mbps 802.11ax @ 20MHz: 286, 258, 229, 206, 172, 154, 137, 103, 68, 51, 34, 17Mbps

## Antenna

Main Antenna	Integrated dual-polarized sector antenna
Gain	17dBi
Second Antenna	Integrated 2.4GHz single-polarized omnidirectional patch antenna

## Wired

First Interface	10/100/1000/2500 Base-T with PoE IN (RJ45)
Second Interface	10/100/1000 Base-T with PoE OUT (RJ45)

## Physical

### Dimensions without mount:

Outdoor unit	Length 57 mm (2.2"), width 144 mm (5.6"), height 389 mm (15.3")
Mount length to pole	130 mm (5.1")

### Weight including mount:

Outdoor unit	2.06 kg (4.5 lb)
--------------	------------------

## Power

Power Supply	802.3at active PoE in (55 VDC)
Power Source	~100-240 VAC (AC to 55 VDC PoE Adapter Included)
Max Power Consumption	Up to 15W / 30W (with PoE out)
2nd Ethernet Port Power Supply	802.3af/at out 55VDC, up to 13W

## Compatibility

Compatible with all LigoDLB 6GHz ax Series

## Software features

- Bridge / Router IPv4 / Router IPv6\*
- Static / Dynamic IP modes with Built-in DHCP server
- NAT / Static routes / Port forward / DMZ
- Main/Failover SSID
- Data and management VLANs (802.1q), with QnQ support
- Site survey, Ping / Traceroute, Spectrum analyzer, Layer 3 / Layer 4 packet analyser\*
- Configurable hardware watchdog (ping, system health)
- User-Controlled PoE out (55V)

Duplexing Scheme

Time Division Duplex

Wireless Security

WPA2/WPA3 Personal, WPA2/WPA3 Enterprise (802.1x), WACL, Client isolation

## Services

Services

SNMP v1/v2c/v3, NTP client, system alerts

Discovery Services

SSDP, CDP/LLDP

## Environmental Specifications

Outdoor Ingress Protection Rating: IP67

Surge Protection

EN61000- 4-5, 10/700µs pulse

Operating Temperature

-40°C (-40°F) ~ +65°C (+149°F)

Humidity

0~95% (Non-Condensing)

## Management

Dedicated 2.4GHz radio

For management from any Wi-Fi compatible client device

System monitoring

SNMP v1/v2c/v3, Syslog, Web UI, Infinity Controller

Configuration

WebUI, Infinity Controller

## Regulatory

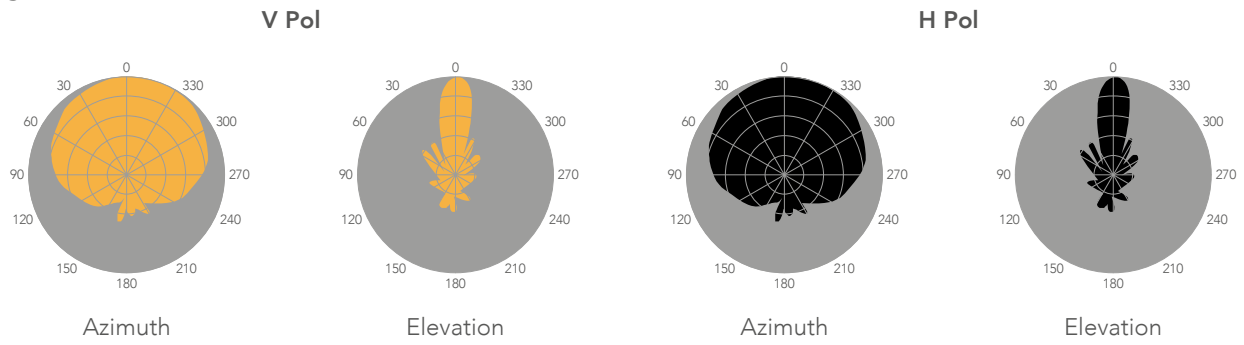
Certification

FCC\*/CE\* - Pending

*\*Coming soon*

## Antenna specifications

### LigoDLB 5-90ax



## Internal antenna

Model name	LigoDLB 5-90ax
Frequency range	5.9 - 7.1 GHz
Gain	17 dBi
Polarization	Dual linear
Cross-pol Isolation	>24 dBi
VSWR	<1.7
Azimuth 3dBm beamwidth (H pol)	90°
Azimuth 3dBm beamwidth (V pol)	90°
Elevation beamwidth	8°



LigoWave

[www.ligowave.com](http://www.ligowave.com)

### LigoDLB 6-90ax

Copyright ©2025 LigoWave. All rights reserved. LigoWave, the LigoWave logo, are trademarks of LigoWave. All other company and product names may be trademarks of their respective companies. While every effort is made to ensure the information given is accurate, LigoWave does not accept liability for any errors or mistakes which may arise. Specifications and other information in this document may be subject to change without notice. To learn more about

LigoWave products, visit [www.ligowave.com](http://www.ligowave.com).

Revision date: 2025/11/06