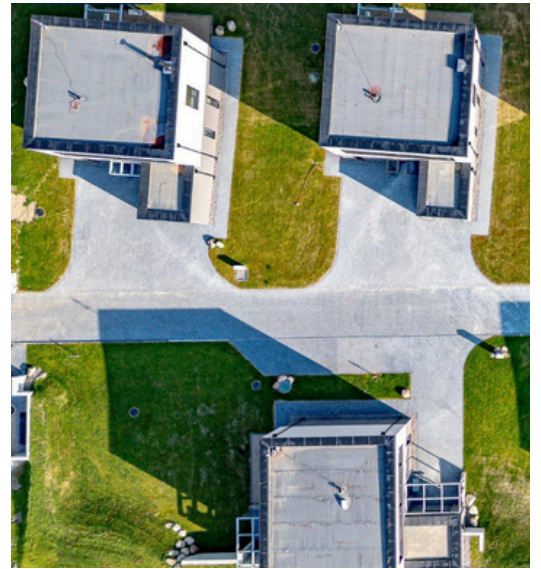


Starlink + LigoVision Solution for Wi-Fi and CCTV Connectivity in a Remote Vilnius Residential Complex

A newly built residential complex of six modern houses in Vilnius faced severe connectivity issues - there was poor cellular signal and no wired internet connection. This made it impossible to provide Wi-Fi for residents and install CCTV cameras for security monitoring in part of the property.



Challenge: Poor Cellular Coverage and No Internet Access

A newly built residential complex of six modern houses in Vilnius faced severe connectivity issues - there was poor cellular signal and no wired internet connection. This made it impossible to provide Wi-Fi for residents and install CCTV cameras for security monitoring in part of the property.

Solution: Starlink + LigoVision series + NFT 2ac

To overcome these challenges, the integrator designed a fully wireless network using Starlink, LigoVision 5-90ac, LigoVision 5-15ac and NFT 2ac devices, ensuring stable connectivity for both Wi-Fi and CCTV systems.

Setup:

The **LigoVision 5-90ac** was installed near the **Starlink** terminal and configured as the main access point to send wireless connectivity across the area. Each house was equipped with a **LigoVision 5-15ac** station, aligned toward the AP for a stable point-to-multipoint connection. Every station provides a wired link to an **NFT 2ac** indoor access point, ensuring full Wi-Fi coverage inside the home.

Three of the six homes were also equipped with IP cameras connected to the network, allowing remote viewing and recording via the **Infinity Controller**. All devices are monitored remotely, allowing system status, performance metrics, and connectivity logs to be accessed in real time.



Outdoor setup



CCTV Results



In Conclusion

The combination of Starlink and LigoVision devices offered a cost-efficient, flexible, and high-performance connectivity solution for a site with poor cellular and no wired service.

This project demonstrates how LigoWave wireless infrastructure can enable Wi-Fi coverage and CCTV monitoring even in remote or infrastructure-limited residential areas.