



LigoWave



LigoPoE af to 24V converter

802.3af/at to passive PoE 24V converter

LigoPoE af to 24V converter

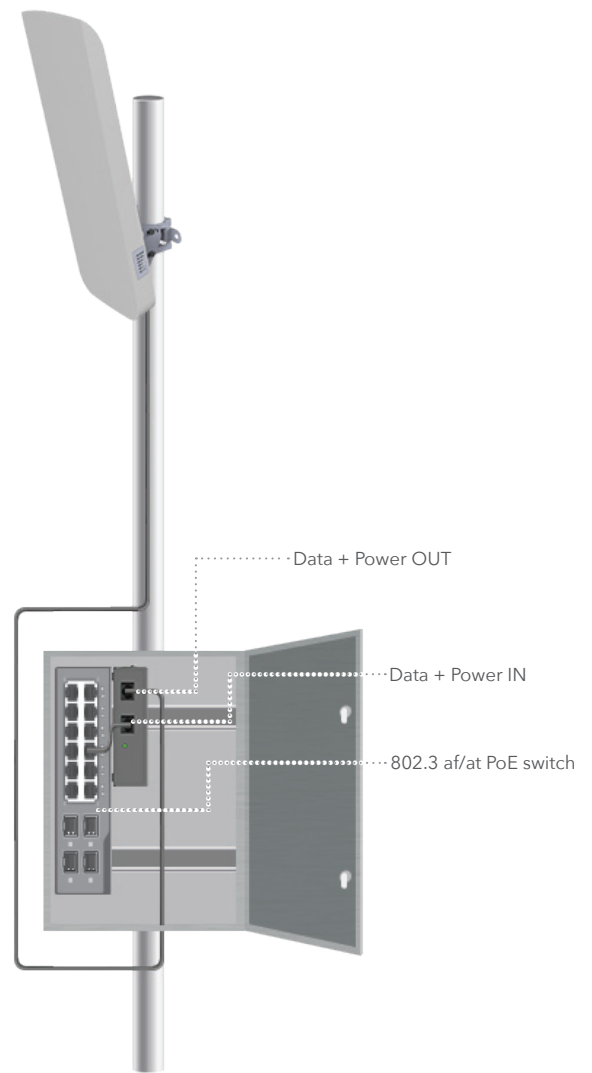
The converter is used to power passive PoE 24V LigoDLB products from standard 802.3af/at switch or other 802.3af/at compatible source. The converter has metal enclosure, DIN rail mounting option, grounding pin, ESD/surge protection and wide operating temperature range what lets use it for industrial applications.

Electrical specifications

Input voltage	37 – 57 V, 802.3af/at
Output voltage	24 VDC +/- 10%
Output power	13 W
Output PoE type	Passive on 4,5(+) and 7,8(-) pins
Data rate	100 Mbps
ESD/surge protection	2 kV line to line, 5 kV line to ground (on output port)

Physical specifications

Input, output jack	RJ45
Dimensions	117 x 87 x 34 mm
Weight	300 g
Operating temperature	-10 to +65 C
UTP/FTP cable length	100 m total (from switch to LigoDLB device)



LigoPoE af to 24V converter